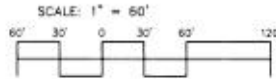


WESTWIND ESTATES No. 2
 A SUBDIVISION IN PART OF THE NORTHWEST 1/4
 OF SECTION 31, T11N, R2W, CITY OF ITHACA,
 GRATIOT COUNTY, MICHIGAN

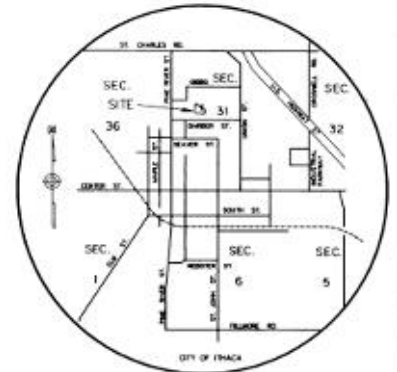
CURVE	RADIUS	LENGTH	CHORD	BEARING	DELTA
1	75.00'	294.12'	138.73'	S58°01'56"E	224°42'09"

LENGTH = 48.65'
 RADIUS = 60.00'
 CHORD BRG. = N61°34'19"E
 CHORD LENGTH = 47.33'
 DELTA ANGLE = 46°27'28"

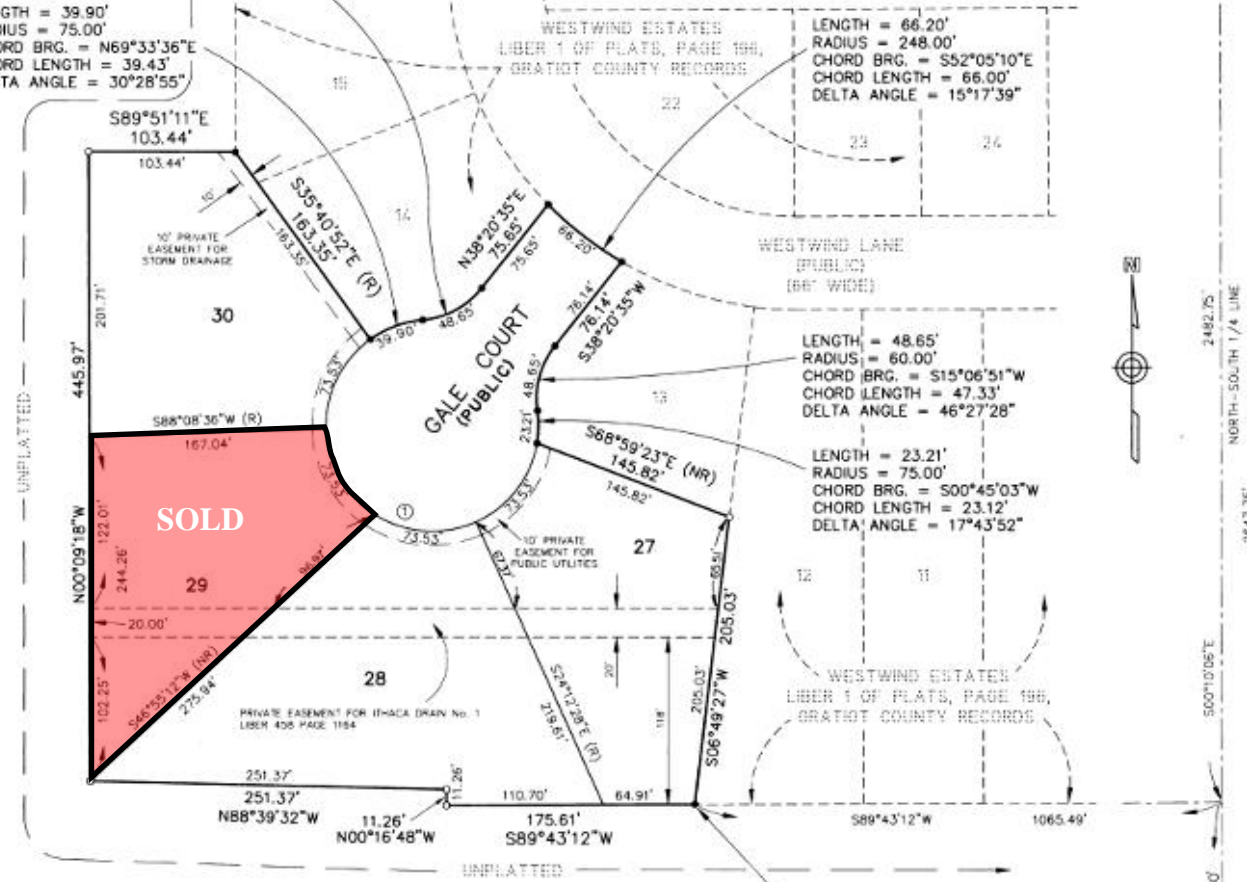
LENGTH = 39.90'
 RADIUS = 75.00'
 CHORD BRG. = N69°33'36"E
 CHORD LENGTH = 39.43'
 DELTA ANGLE = 30°28'55"



NORTH 1/4 CORNER
 SECTION 31, T11N, R2W,
 CITY OF ITHACA,
 LIBER 3, PAGE 34,
 GRATIOT COUNTY RECORDS



VICINITY MAP
 NO SCALE



2482.75' NORTH-SOUTH 1/4 LINE
 2647.75'
 500°10'05"E
 165.00' NORTH-SOUTH 1/4 LINE
 165.00'

- LEGEND**
1. ALL DIMENSIONS ARE IN FEET.
 2. ALL CURVE DIMENSIONS ARE ARC MEASUREMENTS.
 3. MONUMENTS CONSISTING OF A SOLID STEEL ROD 1/2 INCH IN DIAMETER BY 36 INCHES IN LENGTH ENCASED IN A CONCRETE CYLINDER 4 INCHES IN DIAMETER BY 36 INCHES IN LENGTH HAVE BEEN PLACED AT ALL POINTS MARKED THUS (O).
 4. MONUMENTS CONSISTING OF A SOLID STEEL ROD 1/2 INCH IN DIAMETER BY 36 INCHES IN LENGTH ENCASED IN A CONCRETE CYLINDER 4 INCHES IN DIAMETER BY 36 INCHES IN LENGTH HAVE BEEN FOUND AT ALL POINTS MARKED THUS (●).
 5. LOT CORNERS HAVE BEEN MARKED WITH A STEEL ROD 1/2 INCH IN DIAMETER BY 18 INCHES.
 6. (R) INDICATES RADIAL LOT LINES.
 7. (NR) INDICATES NONRADIAL LOT LINES.
 8. BEARINGS WERE ESTABLISHED FROM THE PLAT OF WESTWIND ESTATES AS RECORDED IN LIBER 1 OF PLATS, PAGE 196,197,198, GRATIOT COUNTY RECORDS.



CENTER OF
 SECTION 31, T11N, R2W,
 CITY OF ITHACA,
 LIBER 2, PAGE 277,
 GRATIOT COUNTY RECORDS