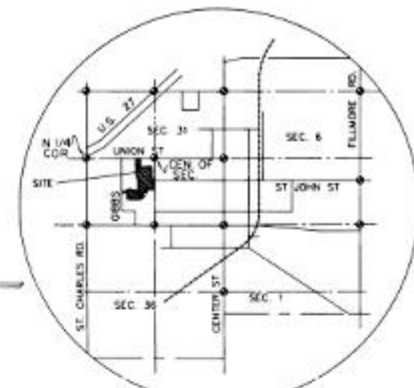


# WESTWIND ESTATES

A PART OF THE SOUTH 1/2 OF THE NORTHWEST 1/4  
OF SECTION 31, T11N, R2W, CITY OF ITHACA,  
GRATIOT COUNTY, MICHIGAN

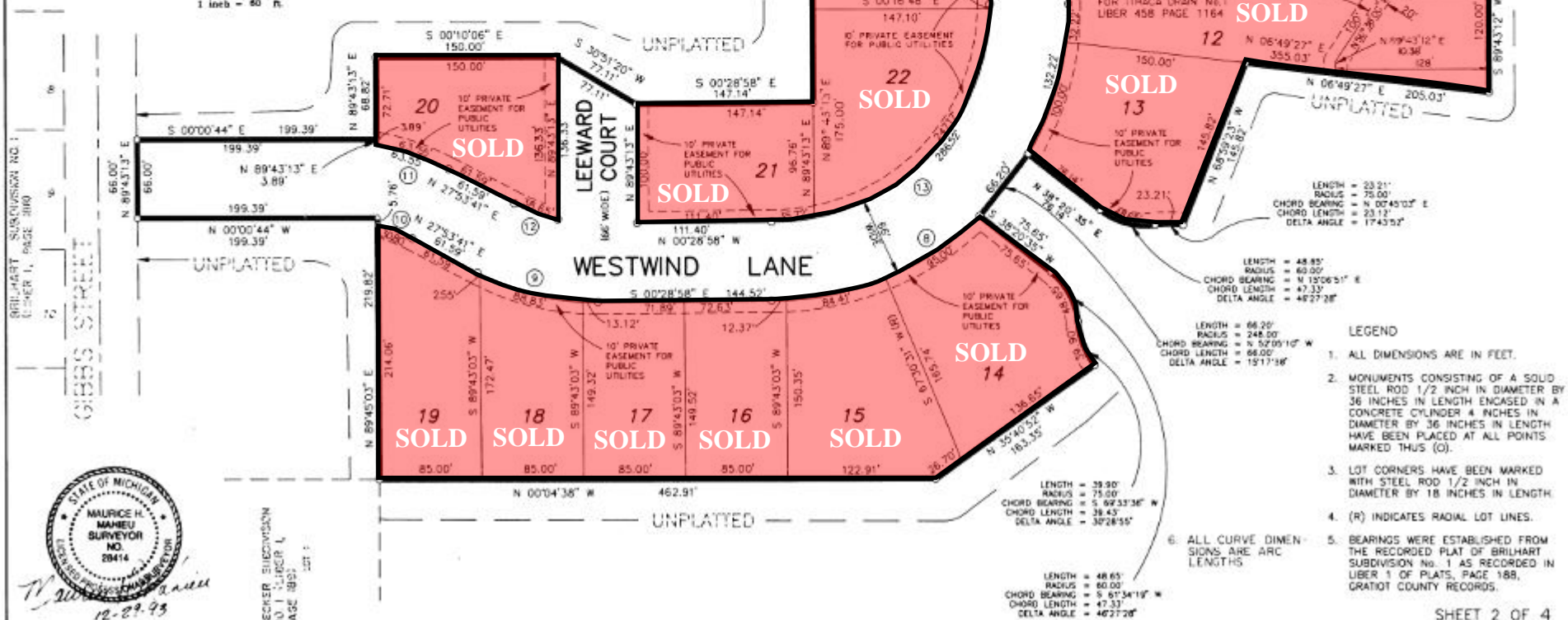
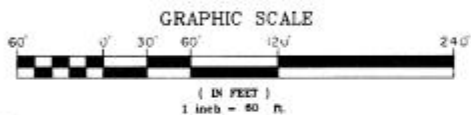


CURVE	RADIUS	LENGTH	TANGENT	CHORD	BEARING	DELTA
8	248.00'	390.20'	248.64'	351.18'	N 45°12'20" W	90°08'54"
9	210.98'	104.50'	53.34'	103.43'	S 13°42'21" W	28°22'39"
10	148.11'	30.80'	15.45'	30.74'	N 21°58'17" E	11°54'47"
11	214.11'	63.55'	32.01'	63.32'	N 19°23'29" E	17°00'23"
12	144.98'	38.65'	19.44'	38.53'	S 20°15'27" W	15°16'26"
13	182.00'	286.52'	182.64'	257.84'	S 45°10'43" E	90°12'05"

**CITY TREASURER'S CERTIFICATE**

The records in my office show no unpaid taxes or special assessments for the five years preceding 12-17-1994, involving the lands included in this plat.

*Rodd H. Blaka*  
Rodd H. Blaka, City Treasurer  
City of Ithaca



- LEGEND
1. ALL DIMENSIONS ARE IN FEET.
  2. MONUMENTS CONSISTING OF A SOLID STEEL ROD 1/2 INCH IN DIAMETER BY 36 INCHES IN LENGTH ENCASED IN A CONCRETE CYLINDER 4 INCHES IN DIAMETER BY 36 INCHES IN LENGTH HAVE BEEN PLACED AT ALL POINTS MARKED THUS (C).
  3. LOT CORNERS HAVE BEEN MARKED WITH STEEL ROD 1/2 INCH IN DIAMETER BY 18 INCHES IN LENGTH.
  4. (R) INDICATES RADIAL LOT LINES.
  5. BEARINGS WERE ESTABLISHED FROM THE RECORDED PLAT OF BRILHART SUBDIVISION NO. 1 AS RECORDED IN LIBER 1 OF PLATS, PAGE 188, GRATIOT COUNTY RECORDS.
  6. ALL CURVE DIMENSIONS ARE ARC LENGTHS.



SECKER SUBDIVISION  
NO. 1 - PER 1  
PAGE 188  
12-27-93