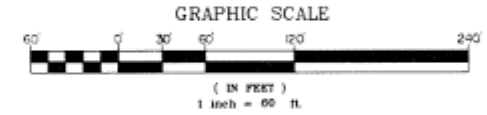
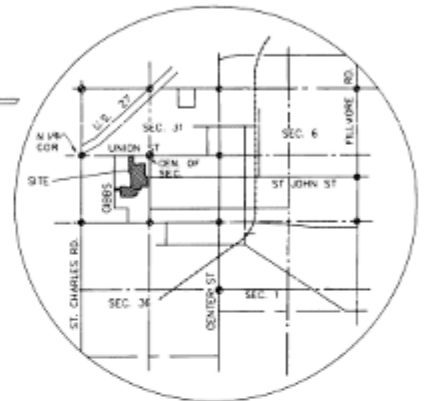
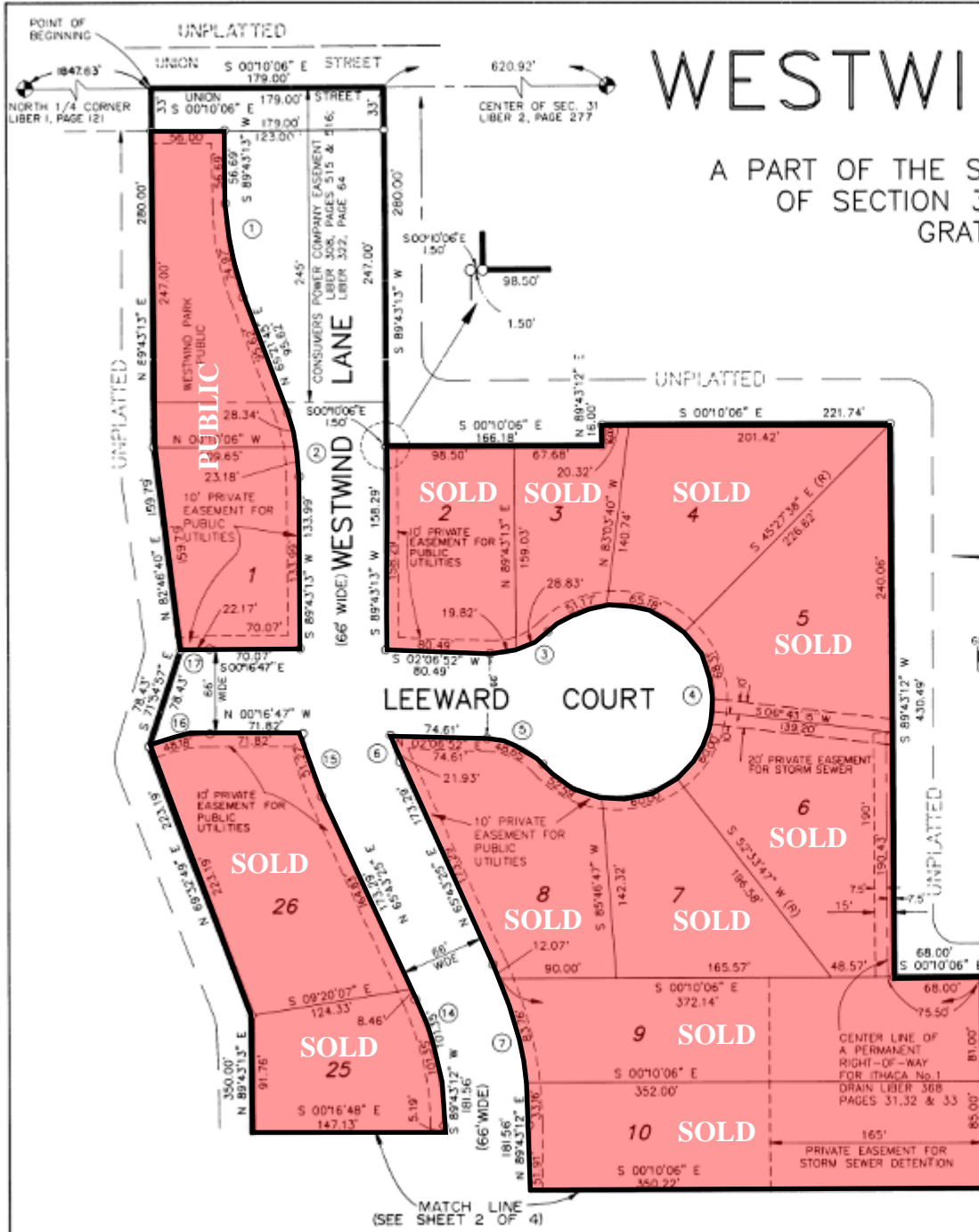


WESTWIND ESTATES

A PART OF THE SOUTH 1/2 OF THE NORTHWEST 1/4 OF SECTION 31, T11N, R2W, CITY OF ITHACA, GRATIOT COUNTY, MICHIGAN



CURVE	RADIUS	LENGTH	TANGENT	CHORD	BEARING	DELTA
1	211.00'	74.97'	37.88'	74.58'	S 79°32'29" W	20°21'28"
2	145.00'	51.52'	26.03'	51.25'	N 79°32'29" E	20°21'28"
3	60.00'	48.65'	25.75'	47.33'	S 21°06'52" E	46°27'28"
4	75.00'	35.75'	17.88'	103.33'	S 87°53'08" E	27°25'45"
5	60.00'	48.65'	25.75'	47.33'	N 25°20'36" E	46°27'28"
6	117.00'	21.93'	11.00'	21.89'	S 71°05'29" W	10°44'15"
7	308.00'	128.99'	65.45'	128.05'	N 77°43'18" E	23°59'44"
14	242.00'	101.35'	51.43'	100.61'	N 77°43'18" E	23°59'44"
15	183.00'	51.27'	25.80'	51.10'	S 73°44'55" W	16°03'06"
16	117.00'	48.18'	24.44'	47.84'	N 12°04'36" W	23°35'39"
17	183.00'	22.17'	11.10'	22.16'	N 03°45'03" W	06°56'33"

- LEGEND**
- ALL DIMENSIONS ARE IN FEET.
 - MONUMENTS CONSISTING OF A SOLID STEEL ROD 1/2 INCH IN DIAMETER BY 36 INCHES IN LENGTH ENCASED IN A CONCRETE CYLINDER 4 INCHES IN DIAMETER BY 36 INCHES IN LENGTH HAVE BEEN PLACED AT ALL POINTS MARKED THUS (C).
 - LOT CORNERS HAVE BEEN MARKED WITH STEEL ROD 1/2 INCH IN DIAMETER BY 8 INCHES IN LENGTH.
 - (R) INDICATES RADIAL LOT LINES.
 - BEARINGS WERE ESTABLISHED FROM THE RECORDED PLAT OF BIR HART SUBDIVISION No. 1 AS RECORDED IN LIBER 1 OF PLATS, PAGE 188, GRATIOT COUNTY RECORDS.
 - CURVE DIMENSIONS ARE ARC LENGTH.



M. Mahieu
12-29-93