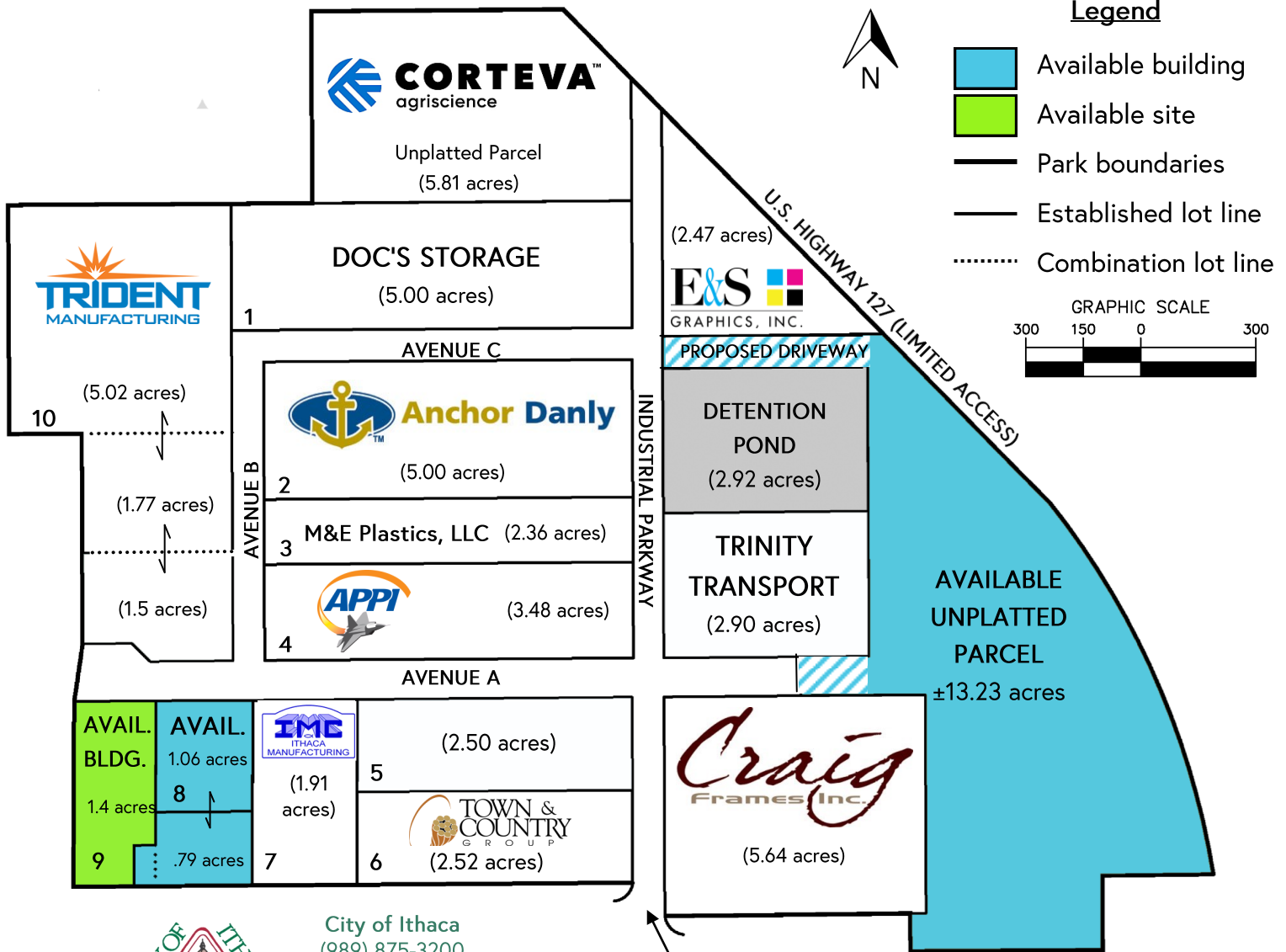


ITHACA INDUSTRIAL PARK



Business Route US 127 & Industrial Parkway, Ithaca, Gratiot County, Michigan, USA

*For more information on available properties or current companies, click on the available parcel or company logo.



City of Ithaca
(989) 875-3200
129 W. Emerson St.
Ithaca, MI 48847
www.ithacami.com

Greater Gratiot Development, Inc.
136 South Main, Ithaca, MI 48847
Ph: (989) 875-2083
www.gratiot.org

Park entrance is approx. 500 ft. from Business Route US-127 (E. Center St.) and access to US Highway 127 North & South is less than a half-mile away.



This drawing is not to be used for design or construction purposes, or to establish permanent property boundaries. Proposed divisions are shown for marketing purposes only. The availability of parcel divisions is neither guaranteed or implied.
By: Wolverine Engineers & Surveyors, Inc.



For more information on Gratiot County's 5 Certified Business Parks, visit www.gratiot.org or Scan this Smartphone QR Code:

